

Pan Head Screws

Stainless Steel, with Phillips Drive, with Recessed Stud for Loss Protection

SPECIFICATION

Stainless steel AISI 304 NI

INFORMATION

Pan head screws GN 7045.2 feature a recessed stud d_3 , making it easy to secure them against loss, such as in a cover.

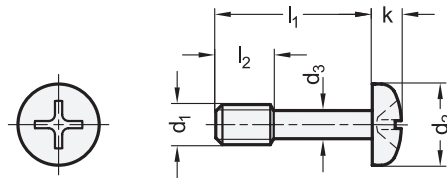
Thus the „captivity of the mounting element“ according to the Machinery Directive 2006 / 42 / EG is given.

For this purpose, instead of a normal through / threaded hole a thread d_1 on both sides, if necessary with a corresponding clearance hole d_4 must be provided. Depending on the design and required clamping length a_1 ... a_3 of the cover, there are a number of assembly options as shown.

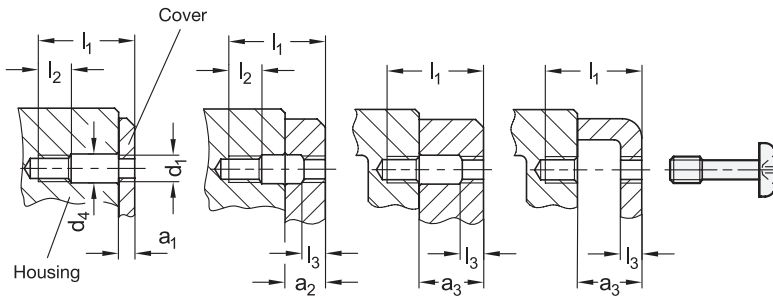


TECHNICAL INFORMATION

- Stainless Steel Characteristics (see page A26)



Assembly options



GN 7045.2

STAINLESS STEEL

Description	d_1	l_1	a_1	a_2	a_3	d_2	$d_3 - 0.3$	d_4	k	l_2	l_3	Phillips drive	
GN 7045.2-M3-12-NI	M 3	12	1.5-3	3-6.5	6.5-8	5.5	2.2	3.5	2	4	1.5	PH 2	1
GN 7045.2-M3-16-NI	M 3	16	3-7	7-8	8-12	5.5	2.2	3.5	2	4	1.5	PH 2	2
GN 7045.2-M4-16-NI	M 4	16	2-5	5-8	8-11	7	3	4.5	2.6	5	2	PH 2	2
GN 7045.2-M4-20-NI	M 4	20	5-9	9-11	11-15	7	3	4.5	2.6	5	2	PH 2	3
GN 7045.2-M5-20-NI	M 5	20	2.5-6	6-10.5	10.5-14	9	3.9	5.5	3.3	6	2.5	PH 2	3
GN 7045.2-M5-25-NI	M 5	25	6-11	11-14	14-19	9	3.9	5.5	3.3	6	2.5	PH 2	4
GN 7045.2-M6-25-NI	M 6	25	3-7	7-13	13-17	10.5	4.6	6.5	3.9	8	3	PH 3	5
GN 7045.2-M6-30-NI	M 6	30	7-12	12-17	17-22	10.5	4.6	6.5	3.9	8	3	PH 3	6
GN 7045.2-M8-30-NI	M 8	30	4-8	8-16	16-20	14	6.3	8.5	5.2	10	4	PH 3	12
GN 7045.2-M8-35-NI	M 8	35	8-13	13-20	20-25	14	6.3	8.5	5.2	10	4	PH 3	14
GN 7045.2-M8-40-NI	M 8	40	13-18	18-25	25-30	14	6.3	8.5	5.2	10	4	PH 3	14